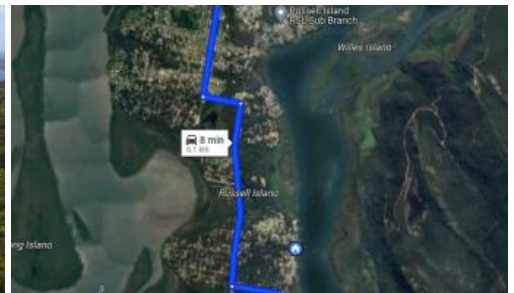




38 Wentworth St, Russell Island



PEACEFUL LOCATION - MOSTLY CLEARED!

Welcome to 38 Wentworth Parade, situated amongst a peaceful bush setting on the eastern side of the island and only 1.5kms from the Wahine Drive boat ramp.

Located just 6kms south of the ferry terminal and shopping centre, this 546m2 block is already cleared with the exception of the larger trees, is elevated and is only 150m from amazing water views out towards North Stradbroke Island!

\$55,000 doesn't usually buy you a mostly cleared block in this location so be quick!

There is power, water and NBN running by ready to be connected.

Russell Island is only a twenty-minute ferry ride from the mainland (Redland Bay) with Brisbane city forty minutes north and the beautiful Gold Coast forty minutes south. Drive to Redland Bay Marina, jump on the ferry, walk 100m to Russell Island Real Estate and discover what awaits you for the next exciting chapter of your life!

Please call Scott on 0450 522 399 to enquire today.

 546 m2

Price	SOLD for \$120,000
Property Type	Residential
Property ID	3322
Land Area	546 m2

Agent Details

Scott Cooper - 0450 522 399

Office Details

Russell Island
10 High Street Russell Island QLD
4184 Australia
07 34091100



The above information provided has been furnished to us by the vendor/s. We have not verified whether or not that information is accurate and do not have any belief in one way or the other in its accuracy. We do not accept any responsibility to any person for its accuracy and do no more than pass it on. All interested parties should make and rely upon their own inquiries in order to determine whether or not this information is in fact accurate.