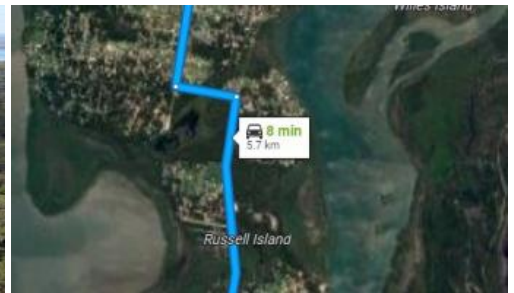
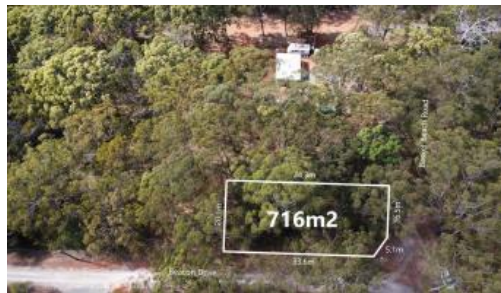




## 37 Basket Beach Rd, Russell Island



### 716m2 CORNER BLOCK CLOSE TO WATER!

Located in a quiet neighbourhood amongst a bush setting, this is a great block to get you into the property market.

Situated only 1.5kms from the famous Wahine boat ramp and 3kms to the north of Sandy Beach Reserve, this generously sized 716m2 block will afford you the room to not only build your home, but also a large shed and veggie gardens, storage for your caravan and boat, etc.! Need to go to the ferry terminal and shopping centre???? Well that's just a 5-1/2km drive!

There is power and water running by ready to be connected.

Sit back and enjoy the sounds of nature!

Russell Island is only a twenty-minute ferry ride to the mainland (Redland Bay) with Brisbane city forty minutes north and the beautiful Gold Coast forty minutes south.

For more information, please call Scott Cooper on 0450 522 399.

The above information provided has been furnished to us by the vendor/s. We have not verified whether or not that information is accurate and do not have any belief in one way or the other in its accuracy. We do not accept any responsibility to any person for its accuracy and do no more than pass it on. All interested parties should make and rely upon their own inquiries in order to determine whether or not this information is in fact accurate.

716 m2

<b>Price</b>	SOLD for \$52,500
<b>Property Type</b>	Residential
<b>Property ID</b>	3163
<b>Land Area</b>	716 m2

### Agent Details

Scott Cooper - 0450 522 399

### Office Details

Russell Island  
10 High Street Russell Island QLD  
4184 Australia  
07 34091100

