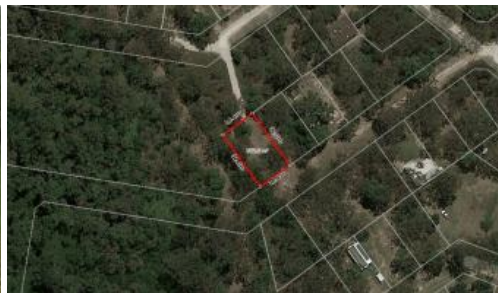




35 Prior Way, Russell Island



VACANT LAND WALKING DISTANCE TO SANDY BEACH!

This beautiful piece of land is located in the most peaceful end of the Island, and only minutes walk to Sandy beach. Boasting a generous size of 582m², the land is mostly cleared and flat. It's ready to build your new home on and sit back and enjoy what beautiful island life has to offer. Call SCOTT COOPER 0450 522 399

The above information provided has been furnished to us by the vendor/s. We have not verified whether or not that information is accurate and do not have any belief in one way or the other in its accuracy. We do not accept any responsibility to any person for its accuracy and do no more than pass it on. All interested parties should make and rely upon their own inquiries in order to determine whether or not this information is in fact accurate.

📏 582 m²

Price	\$65,000
Property Type	Residential
Property ID	2712
Land Area	582 m ²

Agent Details

Scott Cooper - 0450 522 399

Office Details

Russell Island
10 High Street Russell Island QLD
4184 Australia
07 34091100

