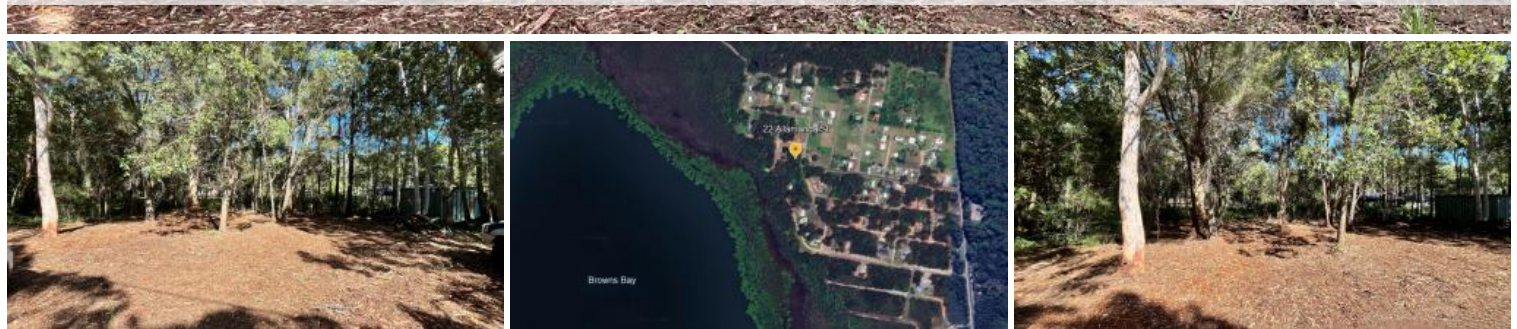




## 22 Allamanda St, Russell Island



☐☐ New Bargain Priced Vacant Block along the gorgeous, quiet & secluded Russell Island South West Coast. ☐☐

**Address:** 22 Allamanda Street, Russell Island

**Description:** Welcome to your opportunity to own a piece of paradise on Russell Island! Nestled along the picturesque Russell Island South West Coast, 22 Allamanda Street offers a prime 607m2 level block that has recently undergone a transformation. The undergrowth has been meticulously tidied up & mulched, leaving approximately 90% of the block cleared and ready for your vision to come to life.

### Features:

- Large 607m2 level block
- Recently tidied up undergrowth, approximately 90% cleared
- Potential for sneaky water glimpses of the Bay with a high-set house
- Conveniently located just under the Russell Island Belt
- And Only 4-5 minutes' drive to Primary School, Town CBD, Barge, and Ferry Terminals

**Location:** Enjoy the tranquility of island living while still being within easy reach of essential amenities. This charming property is just a short drive away from the Primary School, Town CBD, and transportation hubs, ensuring convenience without sacrificing serenity.

**Contact:** Don't miss out on this fantastic opportunity! Contact Geoff today on 0418 194 313 to schedule a viewing or to discuss further details.

📏 607 m2

<b>Price</b>	SOLD for \$47,500
<b>Property Type</b>	Residential
<b>Property ID</b>	3348
<b>Land Area</b>	607 m2

### Agent Details

Geoff Walsh - 0418 194 313

### Office Details

Russell Island  
10 High Street Russell Island QLD  
4184 Australia  
07 34091100



The above information provided has been furnished to us by the vendor/s. We have not verified whether or not that information is accurate and do not have any belief in one way or the other in its accuracy. We do not accept any responsibility to any person for its accuracy and do no more than pass it on. All interested parties should make and rely upon their own inquiries in order to determine whether or not this information is in fact accurate.