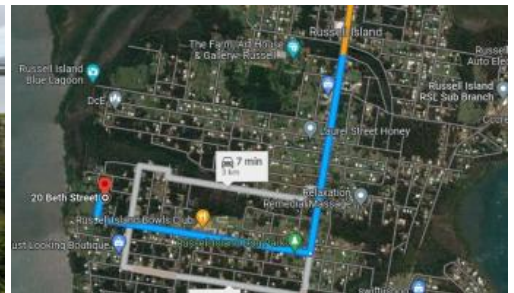




## 20 Beth St, Russell Island



### CLEARED ELEVATED BLOCK OVERLOOKING THE BAY!

Don't miss out on 20 Beth Street.....it ticks all the boxes! This 486m2 elevated, cleared and level block has water already connected with power and NBN ready and waiting. The soil and drainage tests have also been completed and are available upon request.

- Water views never to be built out on
- Quiet cul-de-sac location surrounded by a park and working farm
- Accessed via a sealed road
- 750m to the bowls club
- 3km to the ferry terminal and shopping centre
- Water connected and water meter installed
- Soil & drainage tests complete

Russell Island is a hidden paradise with a short 20 minute ferry ride to the mainland and easy commute to Brisbane CBD or Gold Coast.

Build your dream island beach house with amazing views across the bay and enjoy the serenity of island living. Alternatively, you could take advantage of the booming holiday letting industry and build a profitable Airbnb on the island.

Get in quick.....20 Beth Street will not last!

To enquire please call Scott on 0450 522 399.

486 m2

<b>Price</b>	SOLD for \$82,000
<b>Property Type</b>	Residential
<b>Property ID</b>	3108
<b>Land Area</b>	486 m2

### Agent Details

Scott Cooper - 0450 522 399

### Office Details

Russell Island  
10 High Street Russell Island QLD  
4184 Australia  
07 34091100



The above information provided has been furnished to us by the vendor/s. We have not verified whether or not that information is accurate and do not have any belief in one way or the other in its accuracy. We do not accept any responsibility to any person for its accuracy and do no more than pass it on. All interested parties should make and rely upon their own inquiries in order to determine whether or not this information is in fact accurate.

