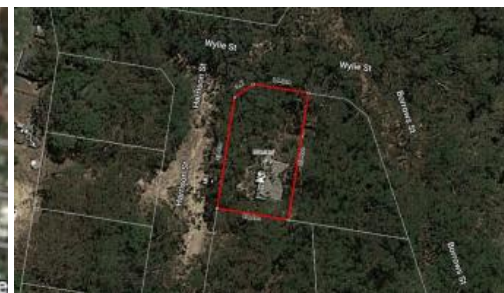
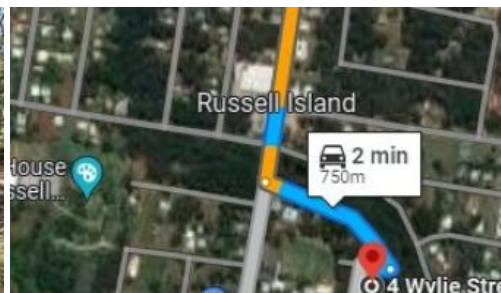


Sold

4 Wylie Street, Russell Island



## INCREDIBLE VALUE - MIDDLE OF TOWN - MUST SELL!

This location seems like it's far removed from anywhere... but it is just 500 metres from the heart of town and 750 metres from the ferry terminal! It is situated right behind the school in a very convenient part of town.

At 574m<sup>2</sup>, this large corner block is hidden away amongst the forest and there is plenty of room for veggie gardens and fruit trees.

There is water and power running past the block ready to be connected.

The structure on the block needs removing but would be a good project for someone.

This really is the perfect piece of land for those looking to relax, be comfortable and enjoy the beautiful island life. Alternatively, this could be the perfect opportunity to build a popular air B&B or a long-term rental on the ever-growing Russell Island.

Russell Island is only a twenty minute ferry ride to the mainland

574 m<sup>2</sup>

**Price** SOLD for  
\$49,000

**Property Type** Residential

**Property ID** 3063

**Land Area** 574 m<sup>2</sup>

### Agent Details

#### Office Details

Russell Island  
10 High Street Russell Island  
QLD 4184 Australia  
07 34091100



(Redland Bay) with Brisbane city forty minutes north and the beautiful Gold Coast forty minutes south.

To enquire please call Scott on 0450 522 399.

*The above information provided has been furnished to us by the vendor/s. We have not verified whether or not that information is accurate and do not have any belief in one way or the other in its accuracy. We do not accept any responsibility to any person for its accuracy and do no more than pass it on. All interested parties should make and rely upon their own inquiries in order to determine whether or not this information is in fact accurate.*