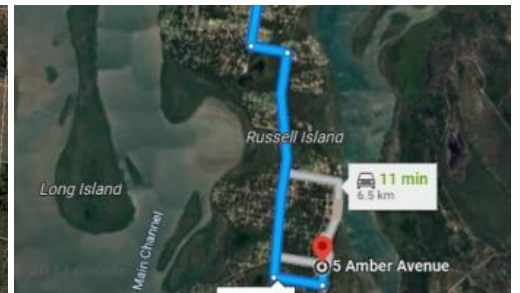




5 Amber Ave, Russell Island



SOUTHERN END TRANQUILITY!

This vacant land is located towards the southern end of the island and is only a three minute drive to the famous Wahine boat ramp and less than seven kilometres to the ferry terminal and shopping centre.

Boasting a generous size of 663m² this block has power, water and NBN running by ready to be connected. With a total of 20.8m of street frontage and 33.0m in length, this is a great building block.

Priced to sell at \$50,000.00, don't miss out on this larger than average size block!

Russell Island is only a twenty-minute ferry ride to the mainland (Redland Bay) with Brisbane city forty minutes north and the beautiful Gold Coast forty minutes south.

To enquire please call Scott on 0450 522 399.

The above information provided has been furnished to us by the vendor/s. We have not verified whether or not that information is accurate and do not have any belief in one way or the other in its accuracy. We do not accept any responsibility to any person for its accuracy and do no more than pass it on. All interested parties should make and rely upon their own inquiries in order to determine whether or not this information is in fact accurate.

663 m²

Price	\$50,000
Property Type	Residential
Property ID	3060
Land Area	663 m ²

Agent Details

Scott Cooper - 0450 522 399

Office Details

Russell Island
10 High Street Russell Island QLD
4184 Australia
07 34091100

