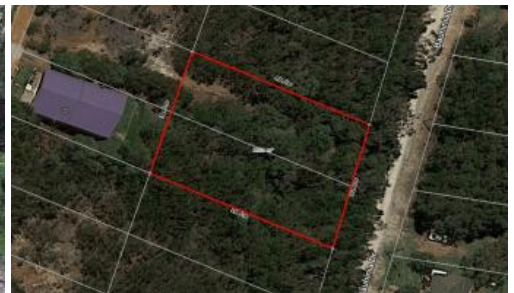




27-29 Bauhinia Dr, Russell Island



PRICED TO SELL! DOUBLE BLOCK NEAR BOAT RAMP!

This great sized parcel of land is a whopping 1,555m² and is on two separate lots that can be kept individually or combined. The blocks are located just five minutes from the famous Wahine Drive boat ramp and is also only a quick drive to the beautiful Sandy Beach picnic area.

Build your big dream home with a huge shed and plenty of room for a boat and veggie gardens, remembering that you have the option to sell the other block if you so desire.

There is power and water running by ready to be connected.

Located on the south eastern part of the Island, this double block is priced to sell at just \$85,000.00!!

This really is the perfect piece of land for those looking to relax, be comfortable and enjoy the beautiful island life. Alternatively, this could be the perfect opportunity to build a popular air B&B or a long-term rental on the ever-growing Russell Island.

Russell Island is only a twenty-minute ferry ride to the mainland (Redland Bay) with Brisbane city forty minutes north and the beautiful Gold Coast forty minutes south.

Please call Scott on 0450 522 399 to enquire today.

📏 1,555 m²

Price	SOLD for \$81,000
Property Type	Residential
Property ID	3058
Land Area	1,555 m ²

Agent Details

Scott Cooper - 0450 522 399

Office Details

Russell Island
10 High Street Russell Island QLD
4184 Australia
07 34091100



The above information provided has been furnished to us by the vendor/s. We have not verified whether or not that information is accurate and do not have any belief in one way or the other in its accuracy. We do not accept any responsibility to any person for its accuracy and do no more than pass it on. All interested parties should make and rely upon their own inquiries in order to determine whether or not this information is in fact accurate.